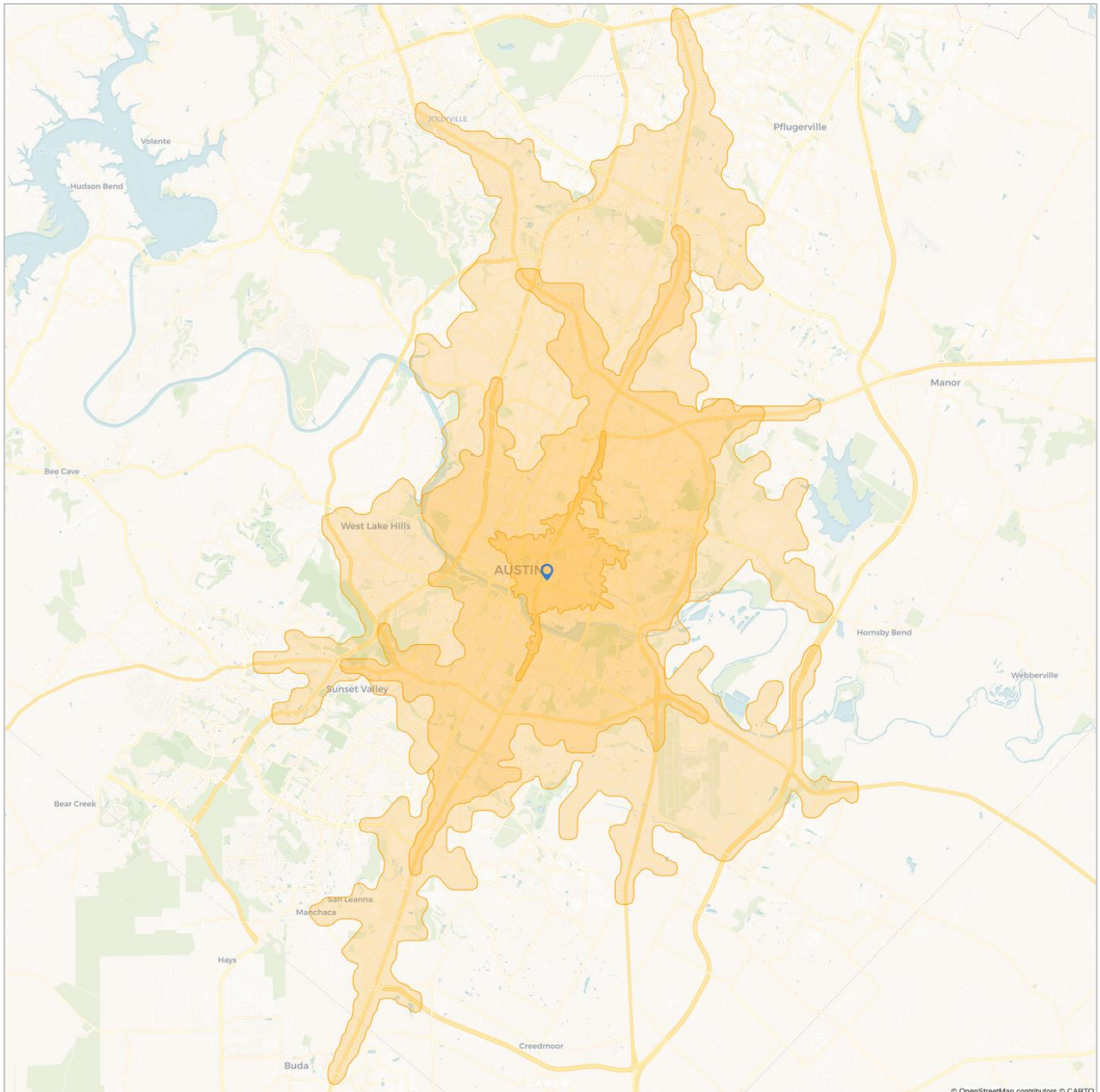


DRIVE TIME REPORT FOR 5, 10, and 15 minutes around 900 E 11th St, Austin, TX 78702

PREPARED FOR: Best Texas BBQ
DATE: January 06, 2025

MAP



5, 10, and 15 minutes around 900 E 11th St, Austin, TX 78702

CITY
Austin

COUNTY
Travis County

How many people live here?

5 MIN	10 MIN	15 MIN
39K	348K	663K
CITY: 968K	COUNTY: 1,308K	

How much money do they make?

5 MIN	10 MIN	15 MIN
\$101K	\$80K	\$83K
CITY: \$91K	COUNTY: \$97K	

median household income

How old are they?

5 MIN	10 MIN	15 MIN
33	32	33
CITY: 35	COUNTY: 36	

median age in years



DEMOGRAPHICS

Population

	5 minutes	10 minutes	15 minutes
Population	39,329	347,726	663,473
Population Density (people per sq mi)	5,975	5,141	3,846

Source: U.S. Census Bureau, 2023 American Community Survey, Tables B01003

Income

	5 minutes		10 minutes		15 minutes	
Median Household Income (in 2023 inflation adjusted dollars)	\$100,932		\$80,190		\$82,908	
Average Household Income (in 2023 inflation adjusted dollars)	\$135,839		\$122,732		\$121,365	
Families in Poverty	656	11%	7,596	12%	13,208	10%
Households	19,725		166,666		310,645	
Less than \$25,000	3,577	18%	28,840	17%	45,234	15%
\$25,000 to \$49,999	2,458	12%	26,780	16%	49,123	16%
\$50,000 to \$74,999	2,279	12%	23,895	14%	48,726	16%
\$75,000 to \$99,999	1,464	7%	18,388	11%	38,689	12%
\$100,000 to \$199,999	5,971	30%	43,308	26%	82,718	27%
Over \$200,000	3,976	20%	25,456	15%	46,156	15%

Source: U.S. Census Bureau, 2023 American Community Survey, Tables B19001, B19013, B19025, B17010

Age

	5 minutes		10 minutes		15 minutes	
Median Age	33		32		33	
Population	39,329		347,726		663,473	
Ages 9 & under	2,309	6%	31,535	9%	64,669	10%
Ages 10 to 19	4,271	11%	36,689	11%	68,545	10%
Ages 20 to 29	9,565	24%	85,079	24%	143,921	22%
Ages 30 to 39	9,395	24%	75,564	22%	143,692	22%
Ages 40 to 49	4,604	12%	42,388	12%	86,962	13%
Ages 50 to 59	3,554	9%	32,712	9%	65,202	10%
Ages 60 to 69	3,661	9%	24,065	7%	49,856	8%
Ages 70 & over	1,970	5%	19,695	6%	40,626	6%

Source: U.S. Census Bureau, 2023 American Community Survey, Tables B01001

Race & Ethnicity

	5 minutes		10 minutes		15 minutes	
Population	39,329		347,726		663,473	
White	20,577	52%	163,146	47%	302,052	46%
Black	4,559	12%	28,495	8%	54,094	8%
American Indian	33	0%	520	0%	834	0%
Asian	2,263	6%	19,844	6%	44,135	7%
Pacific Islander	13	0%	77	0%	319	0%
Other race	223	1%	1,301	0%	2,571	0%
Two or more races	1,417	4%	12,644	4%	25,541	4%
Hispanic or Latino	10,244	26%	121,700	35%	233,927	35%

Source: U.S. Census Bureau, 2023 American Community Survey, Tables B03002

Educational Attainment

	5 minutes		10 minutes		15 minutes	
Population Aged 25 & Over	28,941		240,961		471,193	
No high school diploma	1,935	7%	23,592	10%	46,462	10%
High school graduate or equal	2,910	10%	32,340	13%	67,173	14%
Some college	3,833	13%	33,362	14%	70,245	15%
Associate's degree	892	3%	10,305	4%	23,522	5%
Bachelor's degree	11,723	41%	89,613	37%	165,319	35%
Advanced degree	7,649	26%	51,750	21%	98,473	21%

Source: U.S. Census Bureau, 2023 American Community Survey, Tables B15002

Employment Status

	5 minutes		10 minutes		15 minutes	
Population Aged 16 & Over	35,965		301,677		563,824	
In labor force	26,485	74%	225,356	75%	422,113	75%
Civilian labor force	26,439	74%	225,157	75%	421,722	75%
Employed	25,078	70%	214,047	71%	401,485	71%
Unemployed	1,361	4%	11,109	4%	20,237	4%
In armed forces	46	0%	200	0%	391	0%
Not in labor force	9,480	26%	76,321	25%	141,711	25%

Source: U.S. Census Bureau, 2023 American Community Survey, Tables B23025

Households

	5 minutes		10 minutes		15 minutes	
Households	19,725		166,666		310,645	
Family households	5,844	30%	62,534	38%	132,928	43%
Married couples	4,326	22%	42,364	25%	94,129	30%
With kids under 18	1,115	6%	15,618	9%	38,238	12%
Other family types	1,518	8%	20,170	12%	38,799	12%
Single dad households with kids	176	1%	2,210	1%	4,734	2%
Single mom households with kids	568	3%	6,994	4%	13,481	4%
Non-family households	13,880	70%	104,132	62%	177,717	57%

Source: U.S. Census Bureau, 2023 American Community Survey, Tables B11001, B11003

Homes

	5 minutes		10 minutes		15 minutes	
Homes	21,398		179,184		331,522	
Occupied Homes	19,725		166,666		310,645	
Owner occupied units	7,310	37%	56,906	34%	115,907	37%
Renter occupied units	12,415	63%	109,760	66%	194,738	63%

Source: U.S. Census Bureau, 2023 American Community Survey, Tables B25024, B25003

Housing Unit Value

	5 minutes		10 minutes		15 minutes	
Median Home Value	\$628,066		\$570,557		\$515,157	
Owner Occupied Homes	7,310		56,906		115,907	
Under \$100,000	117	2%	1,789	3%	4,865	4%
\$100,000 to \$199,999	109	1%	2,063	4%	4,314	4%
\$200,000 to \$299,999	238	3%	5,132	9%	14,279	12%
\$300,000 to \$399,999	645	9%	6,564	12%	15,201	13%
\$400,000 to \$499,999	1,293	18%	8,615	15%	17,529	15%
\$500,000 to \$749,999	2,446	33%	15,201	27%	29,127	25%
\$750,000 to \$999,999	1,387	19%	6,849	12%	12,277	11%
\$1,000,000 to \$1,499,999	664	9%	5,640	10%	10,140	9%
\$1,500,000 to \$1,999,999	90	1%	1,748	3%	3,022	3%
Over \$2,000,000	321	4%	3,305	6%	5,153	4%

Source: U.S. Census Bureau, 2023 American Community Survey, Tables B25075

Detailed Age

	5 minutes		10 minutes		15 minutes	
Population	39,329		347,726		663,473	
Male:	20,318	52%	179,429	52%	343,958	52%
Under 5 years	519	1%	7,904	2%	16,543	2%
5 to 9 years	533	1%	7,405	2%	15,994	2%
10 to 14 years	378	1%	6,406	2%	15,617	2%
15 to 17 years	259	1%	3,949	1%	8,961	1%
18 and 19 years	1,082	3%	7,457	2%	10,630	2%
20 years	401	1%	3,896	1%	5,555	1%
21 years	336	1%	4,126	1%	5,343	1%
22 to 24 years	1,142	3%	10,914	3%	18,394	3%
25 to 29 years	2,941	7%	24,419	7%	44,759	7%
30 to 34 years	2,771	7%	23,226	7%	44,015	7%
35 to 39 years	2,628	7%	18,134	5%	34,583	5%
40 to 44 years	1,368	3%	13,259	4%	25,822	4%
45 to 49 years	1,169	3%	10,627	3%	21,556	3%
50 to 54 years	1,223	3%	8,940	3%	18,256	3%
55 to 59 years	816	2%	8,458	2%	16,215	2%
60 and 61 years	576	1%	3,098	1%	6,236	1%
62 to 64 years	542	1%	3,832	1%	7,706	1%
65 and 66 years	279	1%	2,016	1%	4,262	1%
67 to 69 years	594	2%	3,203	1%	6,460	1%
70 to 74 years	390	1%	3,722	1%	7,864	1%
75 to 79 years	228	1%	2,172	1%	4,452	1%
80 to 84 years	58	0%	953	0%	2,230	0%
85 years and over	84	0%	1,311	0%	2,506	0%
Female:	19,011	48%	168,296	48%	319,515	48%
Under 5 years	556	1%	9,084	3%	17,130	3%
5 to 9 years	701	2%	7,141	2%	15,002	2%
10 to 14 years	435	1%	5,084	1%	12,707	2%
15 to 17 years	435	1%	4,547	1%	8,964	1%
18 and 19 years	1,682	4%	9,245	3%	11,665	2%
20 years	632	2%	4,130	1%	5,748	1%
21 years	361	1%	4,225	1%	5,452	1%
22 to 24 years	935	2%	11,250	3%	18,574	3%
25 to 29 years	2,817	7%	22,119	6%	40,097	6%
30 to 34 years	2,482	6%	19,810	6%	36,910	6%
35 to 39 years	1,514	4%	14,394	4%	28,184	4%
40 to 44 years	1,085	3%	10,645	3%	22,368	3%
45 to 49 years	982	2%	7,857	2%	17,216	3%
50 to 54 years	888	2%	8,022	2%	16,078	2%
55 to 59 years	628	2%	7,291	2%	14,653	2%
60 and 61 years	382	1%	2,661	1%	6,003	1%
62 to 64 years	519	1%	3,800	1%	8,530	1%
65 and 66 years	185	0%	1,802	1%	4,137	1%
67 to 69 years	584	1%	3,653	1%	6,523	1%
70 to 74 years	632	2%	4,645	1%	9,411	1%
75 to 79 years	183	0%	2,894	1%	5,899	1%
80 to 84 years	151	0%	1,623	0%	3,465	1%
85 years and over	244	1%	2,375	1%	4,799	1%

Source: U.S. Census Bureau, 2023 American Community Survey, Tables B01001, B01003. The numbers in the above table may not total up due to rounding.

POPULATION PROJECTIONS

State and county population projections.

Geography	2010 - 2020	2020 - 2030 Projected	Is Projected To:
Texas	16% 25,145,561 - 29,145,505	13% 29,145,505 - 32,912,882	Grow
Hays County	53% 157,107 - 241,067	48% 241,067 - 356,181	Grow
Travis County	26% 1,024,266 - 1,290,188	22% 1,290,188 - 1,572,639	Grow
Williamson County	44% 422,679 - 609,017	34% 609,017 - 815,021	Grow

Source: Texas Demographic Center, Projections of the Total Population of Texas and Counties in Texas, 2020-2060, October 2022.
U.S. Census Bureau, Decennial Censuses 2010, and 2020.

Methodology

RADIUS ESTIMATES

First, we subtract the 2023 US Census Bureau's water areas from the 2023 block groups. Then we calculate the project's radiuses, the block groups minus water areas that intersect the radiuses, and the percent of each block group's area that's in the radiuses (overlap). Next, the overlap percent is multiplied by the Census demographics for each block group. Finally, we sum the overlap times the demographics for all block groups that intersect a radius to produce the demographic estimate for the radius.

The benefits of this methodology are that it allows for:

1. the use of the **most current data** for small area geographies from the US Census Bureau;
2. the estimation of demographics for radius distances using dissimilar shaped Census block groups;
3. **data comparability** (because estimates for small radiuses and large radiuses use the same methodology, geographies and datasets); and
4. improved estimates along coastlines and large water bodies by removing water areas.

This methodology assumes that the **population is equally distributed** throughout a block group. This assumption can result in unlikely estimates for small radiuses (i.e. 1 mile) in rural areas with low population densities and thus, large geographic area block groups.

MEDIAN ESTIMATES

To estimate median values, we use a simple method explained in the book "Beginning Statistics: An Introduction for Social Scientists" by Diamond I and Jefferies J. Here's how it works:

1. We pull grouped data for your area of interest and order the groups from smallest to largest. This helps us see which group the middle value, or median, is in.
2. We figure out exactly where the middle value sits within its group. We look at how far into the group it is, as a percentage, starting from the bottom end.
3. Then, we check how big the gap is between the smallest and largest numbers in that group.
4. We use the percentage to find a part of that gap. This percentage tells us how much to add to the smallest number in the group to get the median.

If you have any questions, you can reach Cubit at 1.800.939.2130 or at www.cubitplanning.com.

CUBIT

Prepared by Cubit
6800 West Gate Blvd. Ste. 132-366
Austin, TX 78745-4648
www.cubitplanning.com
1.800.939.2130

Order your radius report (\$75) + drive times
(\$50) for only **\$125**

BUY NOW

100% moneyback guarantee